

腹部超音波検査 ※ 静止画のみ掲載

設問1.

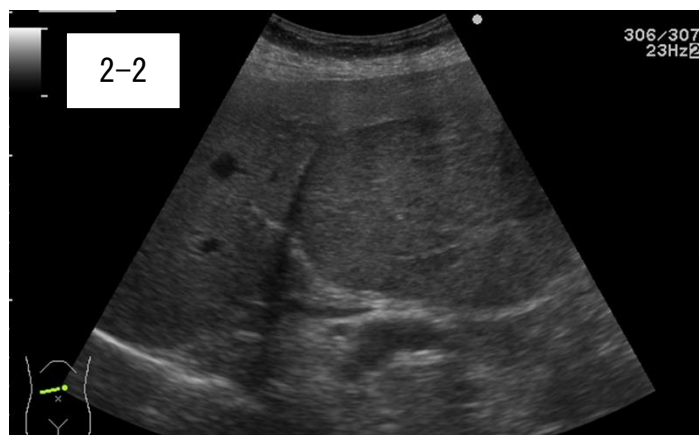


心窩部横断走査

設問2.



右季肋部走査

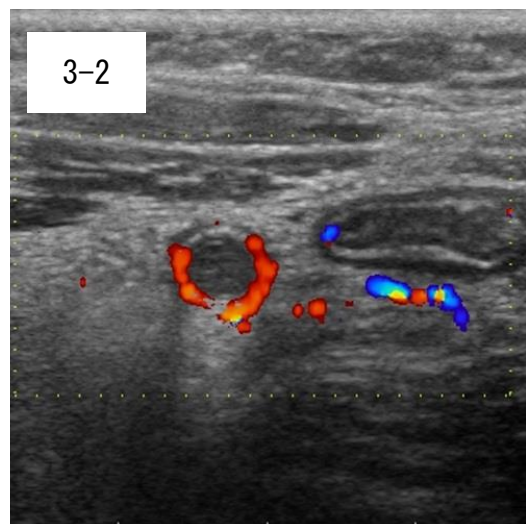


心窩部横断走査

設問3.



右下腹部長軸像

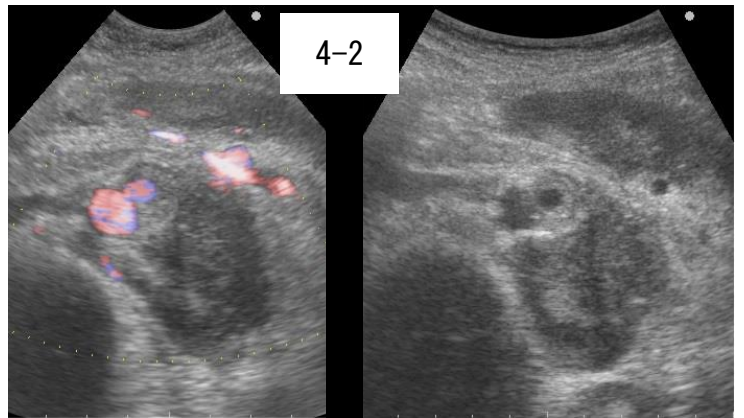


右下腹部短軸像

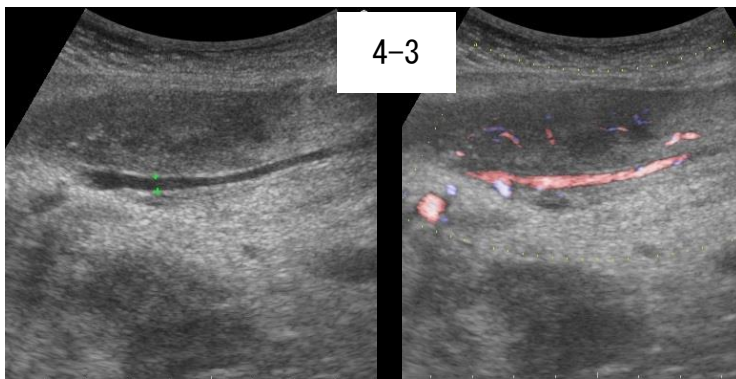
設問4.



腹部縦断走査



腹部正中横断走査



腹部正中縦断走査



心窩部（膵臓長軸）走査